

The final effect of prenatal operation  
on lower urinary tract function is as  
yet unknown.

*Silesian School of Medicine , Katowice, Poland*





The aim was the evaluation of the :

*-lower urinary tract function*

The aim was the evaluation of the :

*-lower urinary tract function*

*-degree of social urine continence*

The aim was the evaluation of the :

- lower urinary tract function*
- degree of social urine continence*
- presence of obstipation*

# Patients and Methods:

72 patients

**Group I** - 36 patients **prenatally operated**

**Group II** - 36 patients **postnatally operated**

# Patients and Methods:

All children, regardless of the time at which they undergo the MMC plastic operation, have included the same therapeutic treatment after birth :

# Patients and Methods:

All children, regardless of the time at which they undergo the MMC plastic operation, have included the same therapeutic treatment after birth :

*- anticholinergics,*



# Patients and Methods:

All children, regardless of the time at which they undergo the MMC plastic operation, have included the same therapeutic treatment after birth :

- *anticholinergics,*
- *CIC,*

# Patients and Methods:

All children, regardless of the time at which they undergo the MMC plastic operation, have included the same therapeutic treatment after birth :

- *anticholinergics,*
- *CIC,*
- *urine sanitizing drugs*

## We analyzed:

1. USG of urinary tract
2. Urodynamic Tests
3. Cystourethrography
4. Degree of social dryness
5. Presence of obstipations

## 2.Urodynamic tests:

- Bladder capacity

## 2.Urodynamic tests:

- Bladder capacity
- Bladder compliance

## 2.Urodynamic tests:

- Bladder capacity
- Bladder compliance
- Bladder muscles functions

*(m.detrusor urinae and m.sphincter of urethra)*

## 2.Urodynamic tests:

- Bladder capacity
- Bladder compliance
- Bladder muscles functions  
*(detrussor and sphincter of urethra)*
- Intervesical pressure

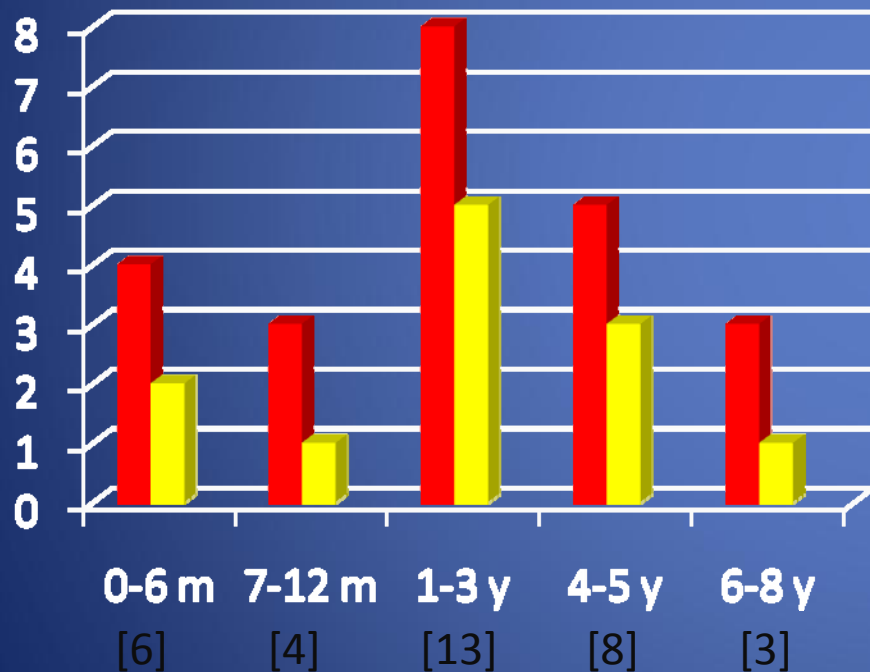
## 2.Urodynamic tests:

- Bladder capacity
- Bladder compliance
- Bladder muscles functions  
*(detrussor and sphincter of urethra)*
- Intervesical pressure
- LPP

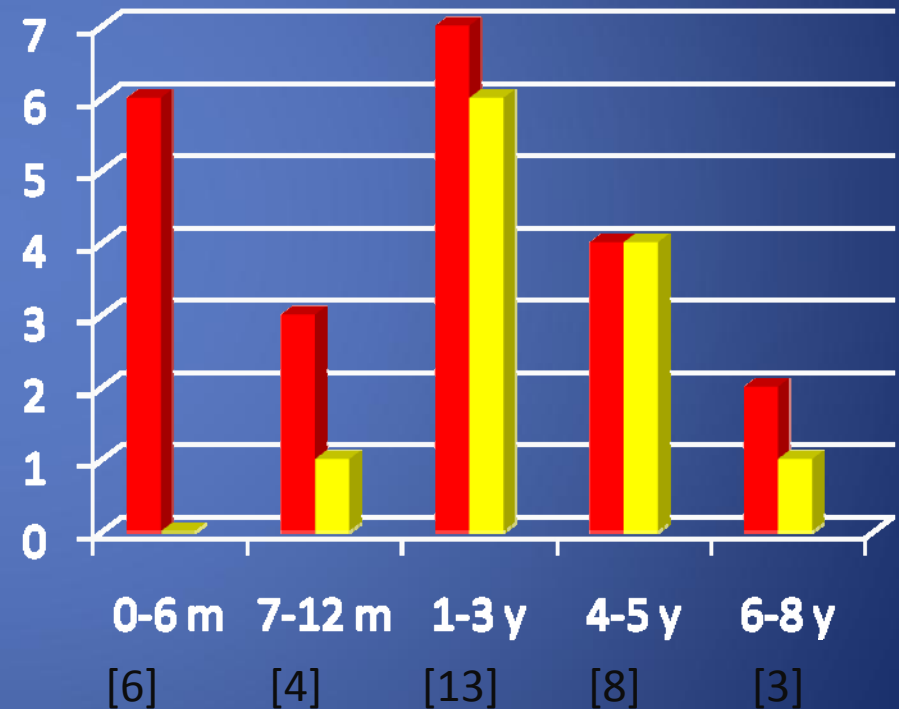


## 2. Urodynamic tests

Prenatally operated



Postnatally operated



Good results

Bad results

### 3. Cystourethrography:

**Group I - prenatally operated**

*1 patient with one side RVU III ° [1-3 years]*

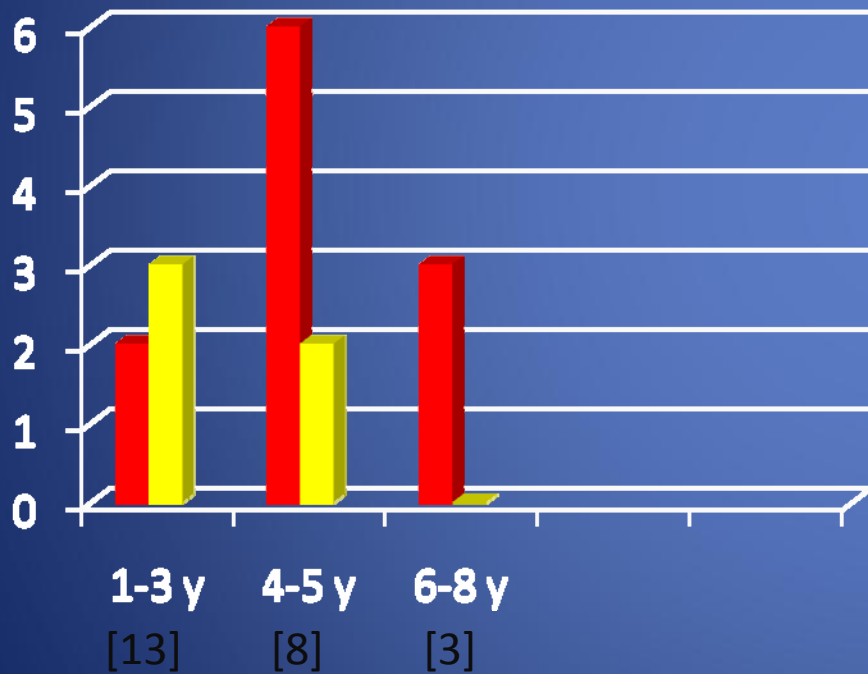
**Group II - postnatally operated**

*1 patient with bilateral RVU V ° [7-12 months]*

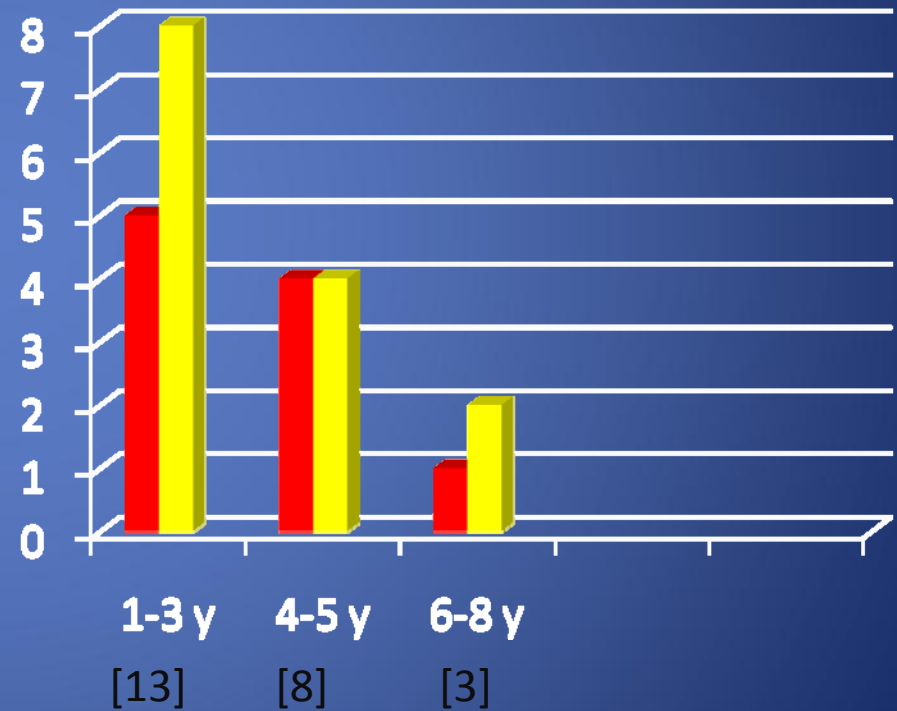
*1 patient with one side RVU III ° [1-3 years]*

## 4. Social dryness

Prenatally operated



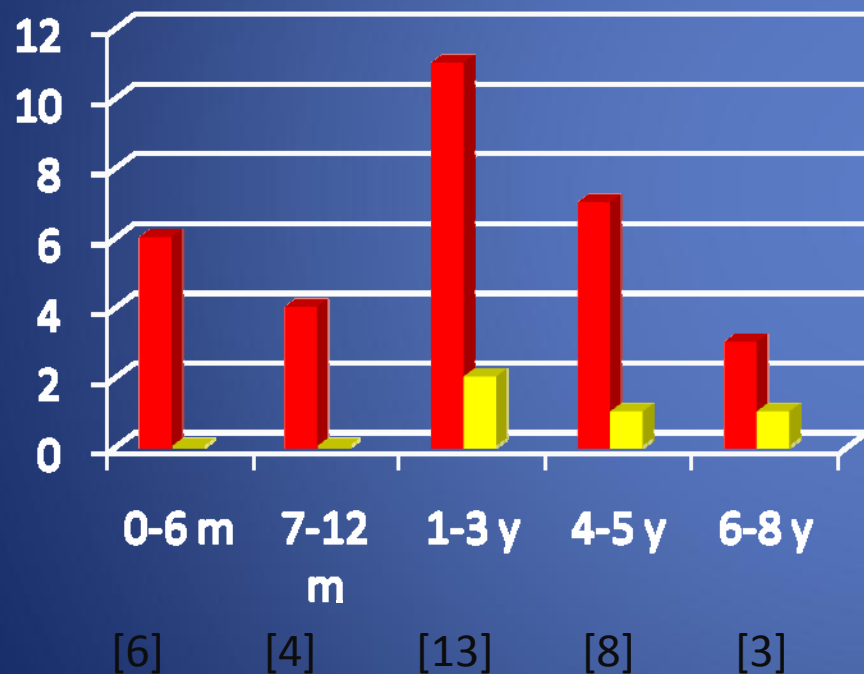
Postnatally operated



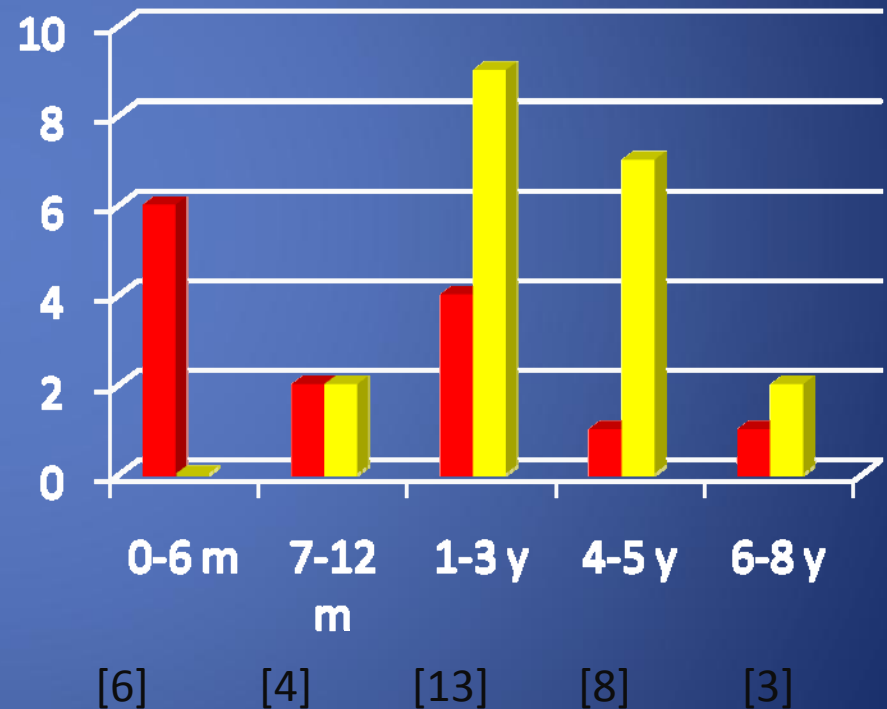
Dry  
Wet

# 5. Obstipations

Prenatally operated

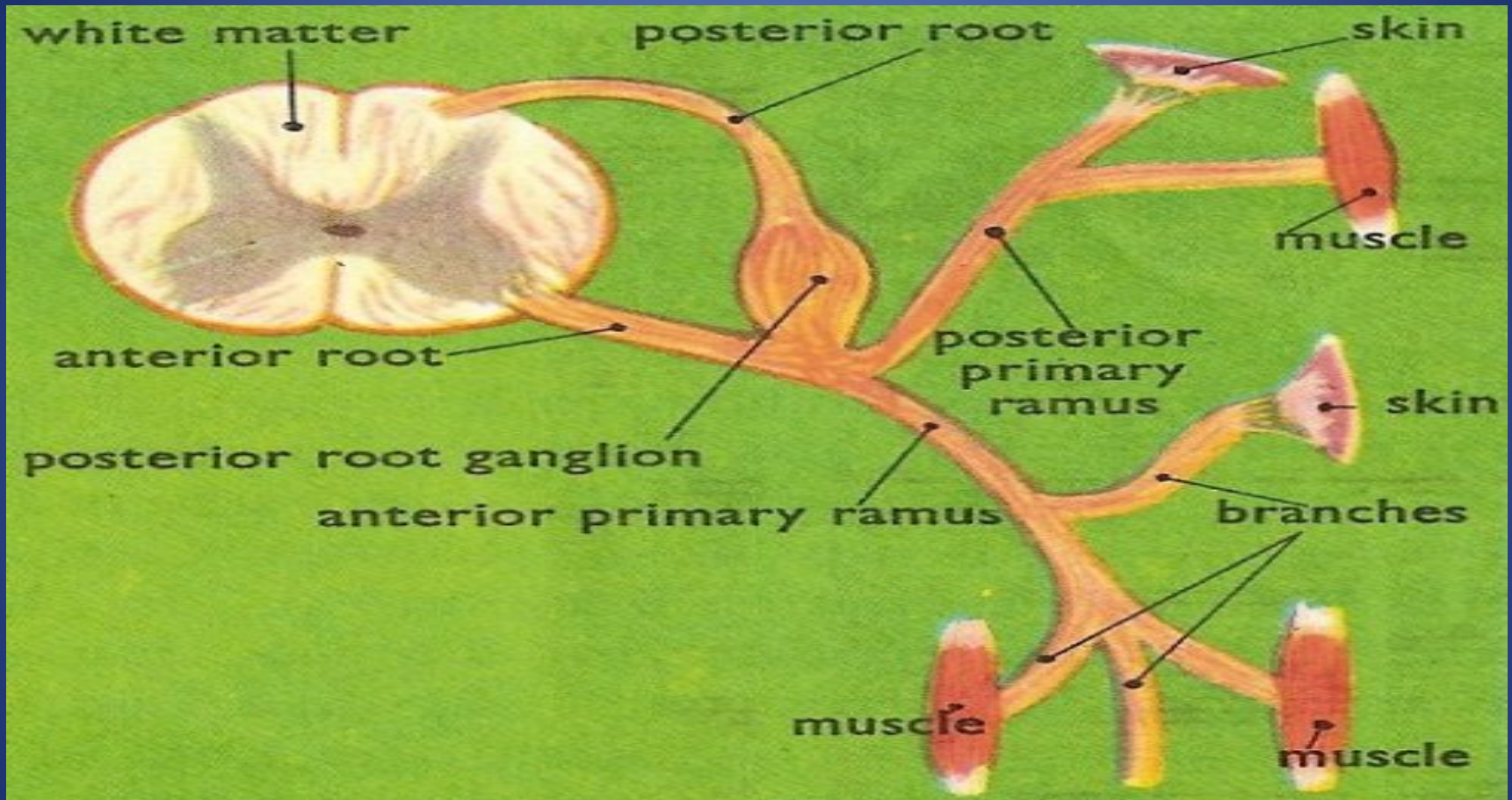


Postnatally operated



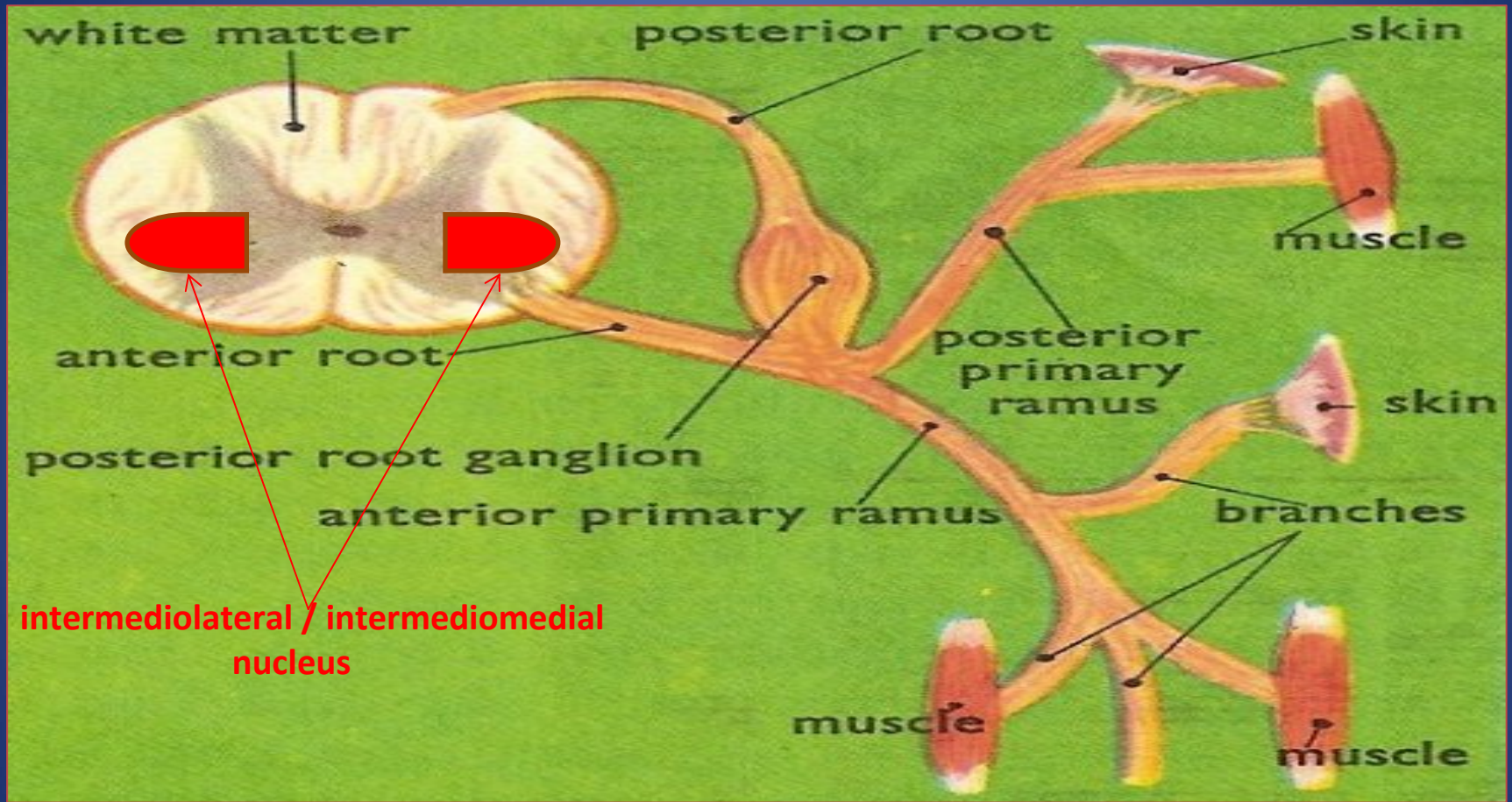
Regular defecation  
Obstipations

# Coments

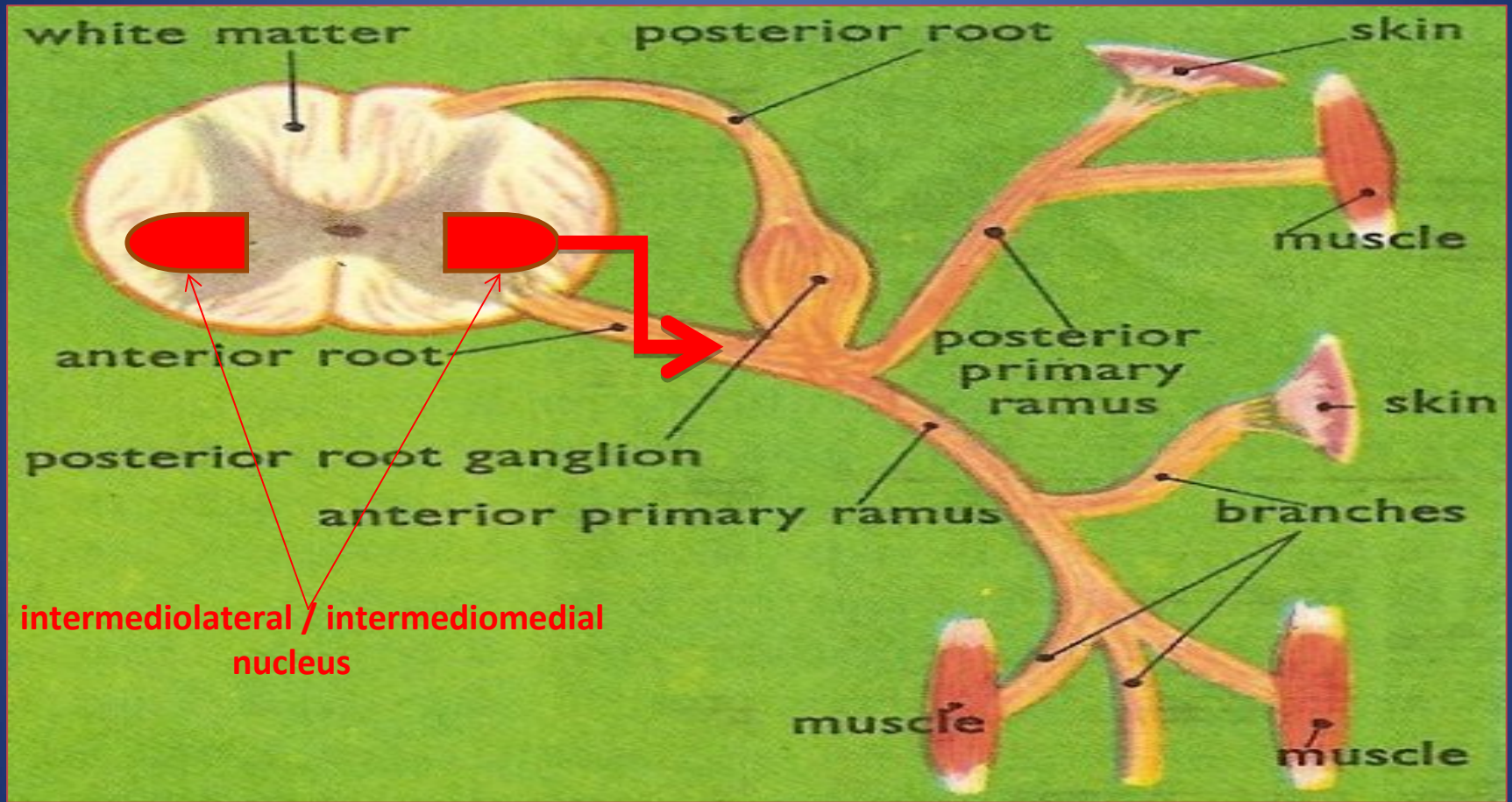




# Comments

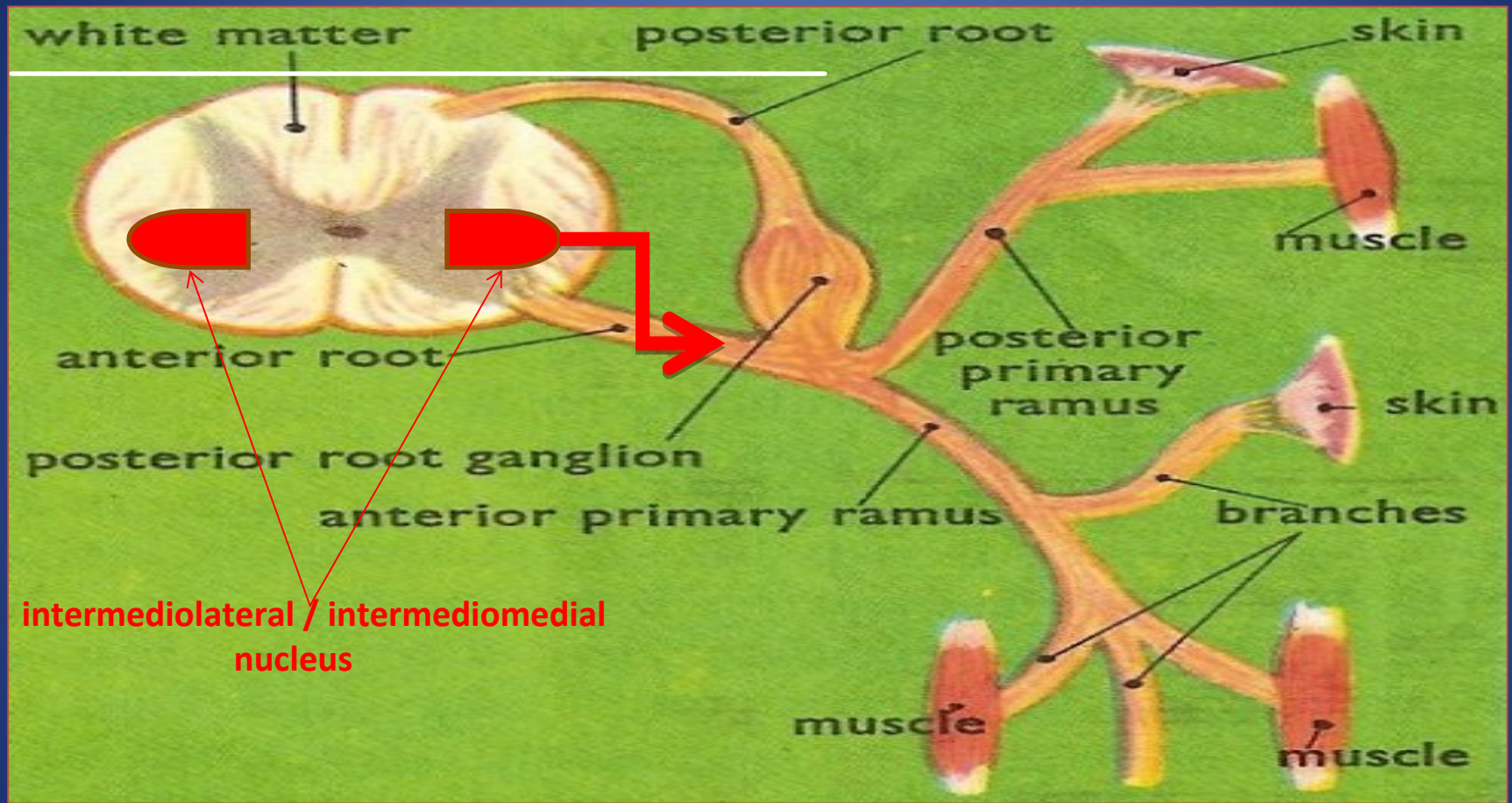


# Comments





# Comments





# Conclusions:

1. Prenatal operation of MMC does not significantly affect the improvement of lower urinary tract function,

# Conclusions:

1. Prenatal operation of MMC does not significantly affect the improvement of lower urinary tract function,

*but it may have an impact on the:*

# Conclusions:

1. Prenatal operation of MMC does not significantly affect the improvement of lower urinary tract function,

*but it may have an impact on the:*

2. improvement of the degree of social urine continence,

# Conclusions:

1. Prenatal operation of MMC does not significantly affect the improvement of lower urinary tract function,

*but it may have an impact on the:*

2. improvement of the degree of social urine continence,

3. better function of the distal part of the large intestine.

# European Club for Fetal Surgery

[www.ecfs.ch](http://www.ecfs.ch)





**Thank You for Yor attention**