

Myelomeningocele: Prenatal Diagnosis, Prenatal Counselling, and Current Management in Austria

Matthias Scheier
University Hospital Innsbruck
matthias.scheier@fetalmedizin.com

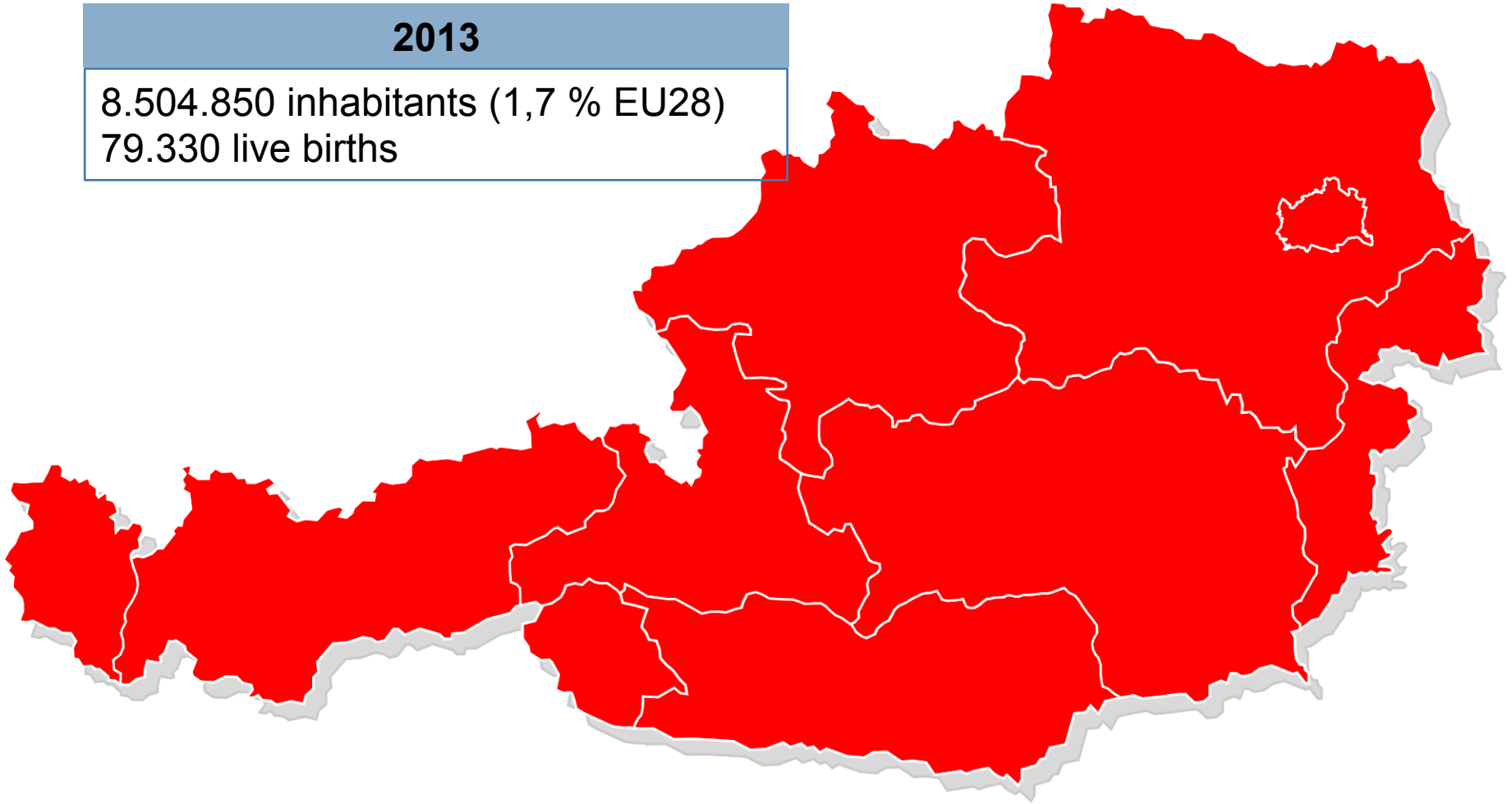


Frauenheilkunde Innsbruck

Demographic Data

2013

8.504.850 inhabitants (1,7 % EU28)
79.330 live births



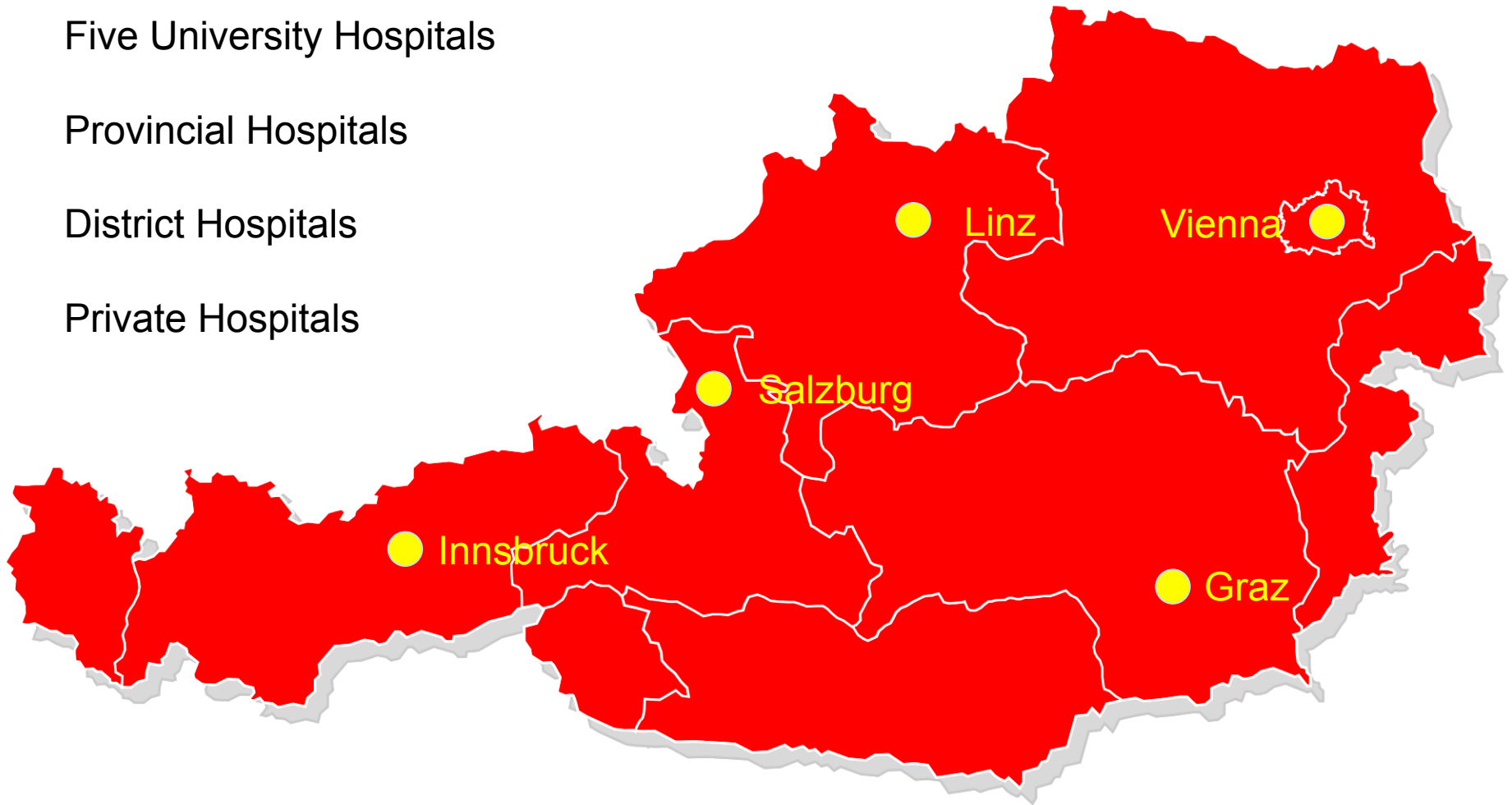
Health Services

Five University Hospitals

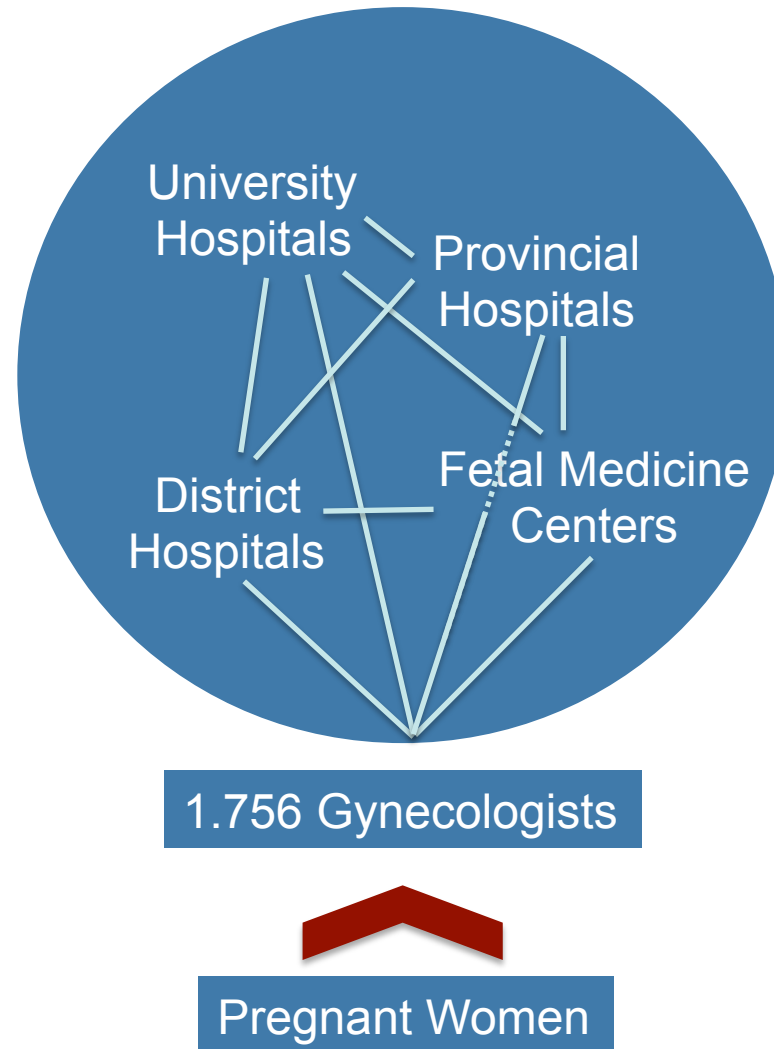
Provincial Hospitals

District Hospitals

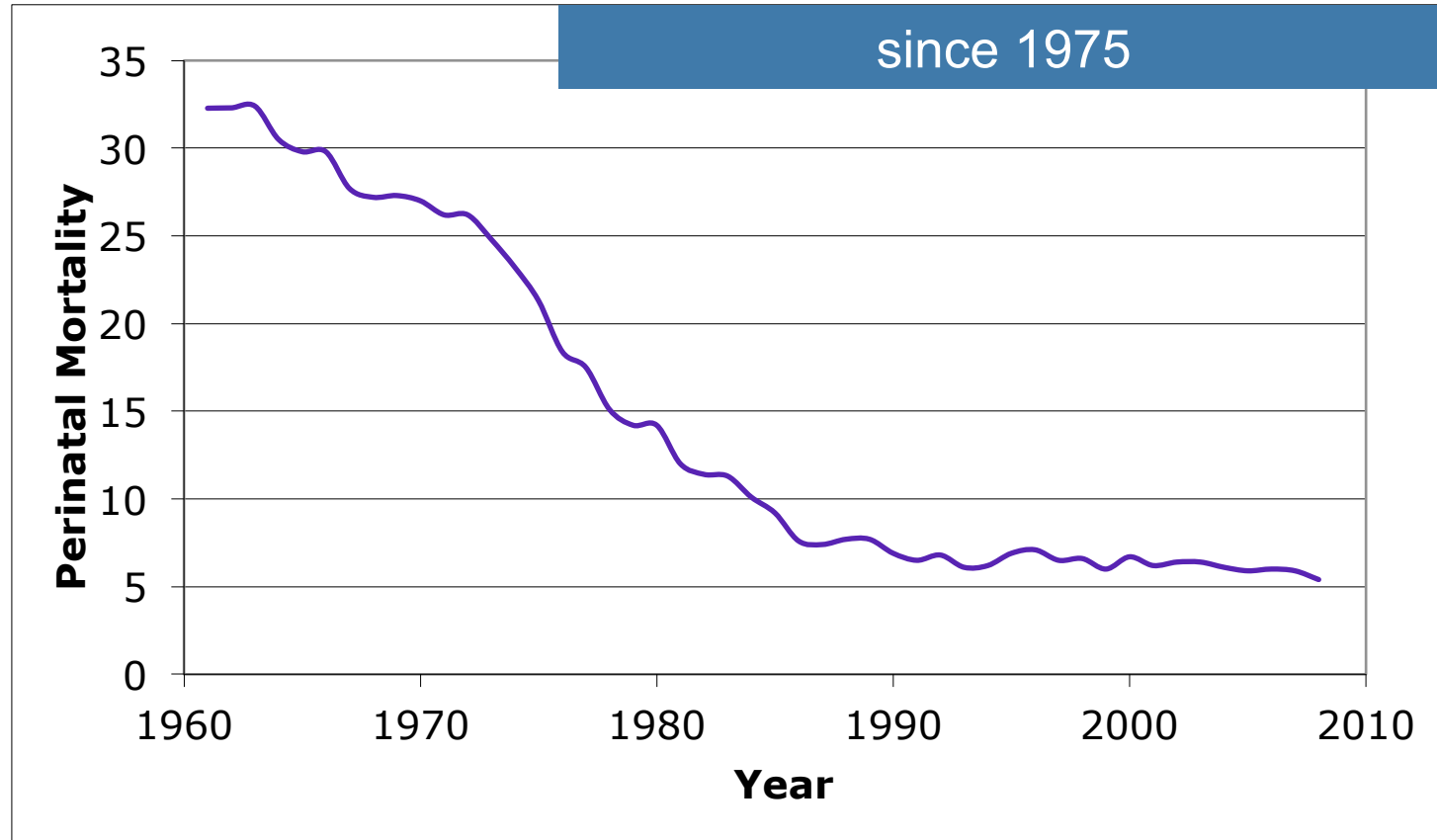
Private Hospitals



Pregnancy Care in Austria



Pregnancy Care in Austria



Pregnancy Care in Austria



introduced in 1975

- Five prenatal examinations
 - Three ultrasound scans
- high uptake rate due to financial reward
- ten prenatal examinations up to six years

Ultrasound Scan 8 to 12 weeks

(since 2013)

...but no detailed ultrasound

Ultrasound Scan 16 to 22 weeks

Ultrasound Scan 30 to 34 weeks

Open Spina Bifida

Styria 2008 - 2012

51 569 deliveries

14 chromosomally normal fetuses with spina bifida

1 : 3 600 deliveries



Health Services

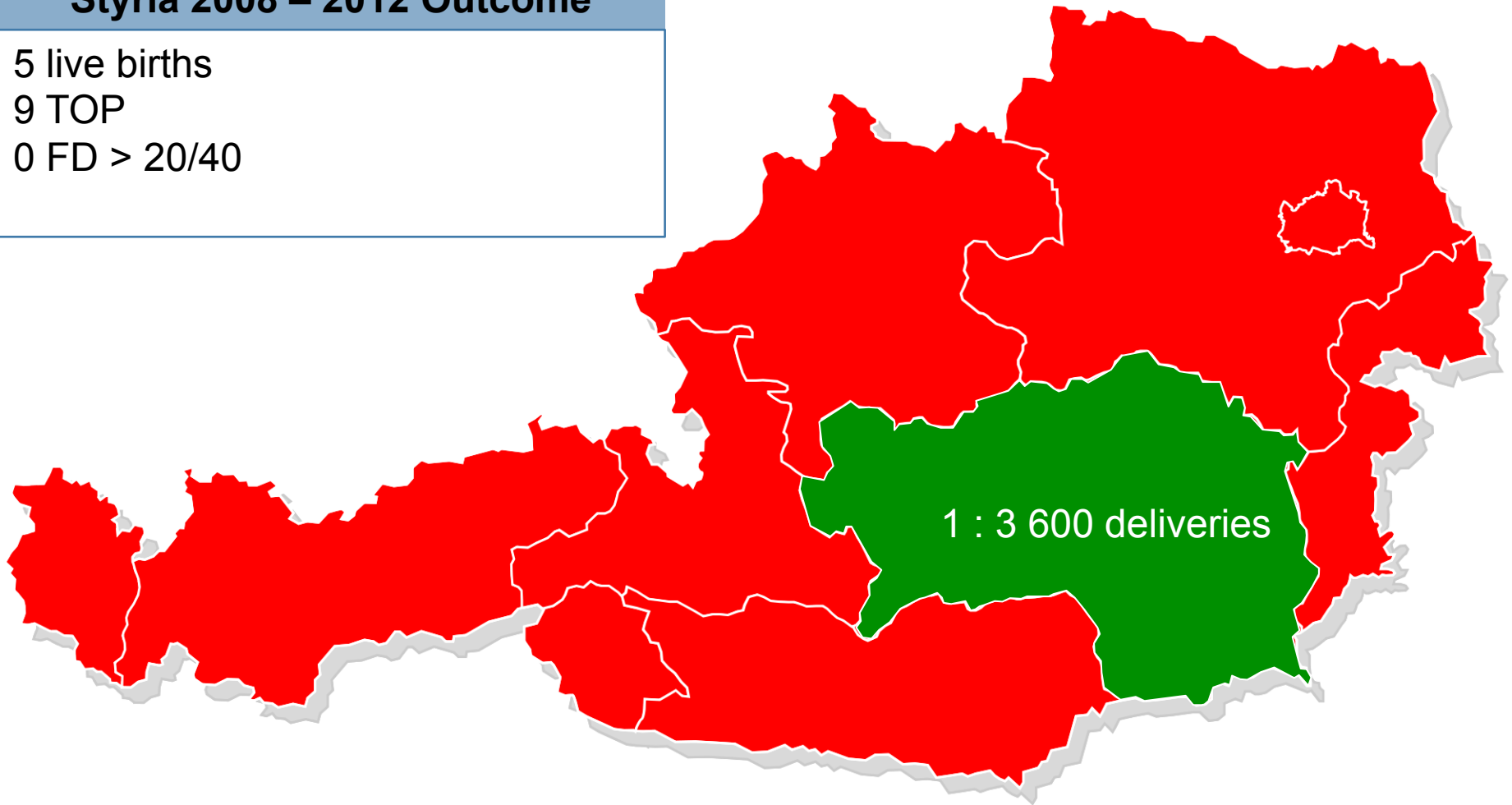


22 cases / year in Austria

Health Services

Styria 2008 – 2012 Outcome

5 live births
9 TOP
0 FD > 20/40



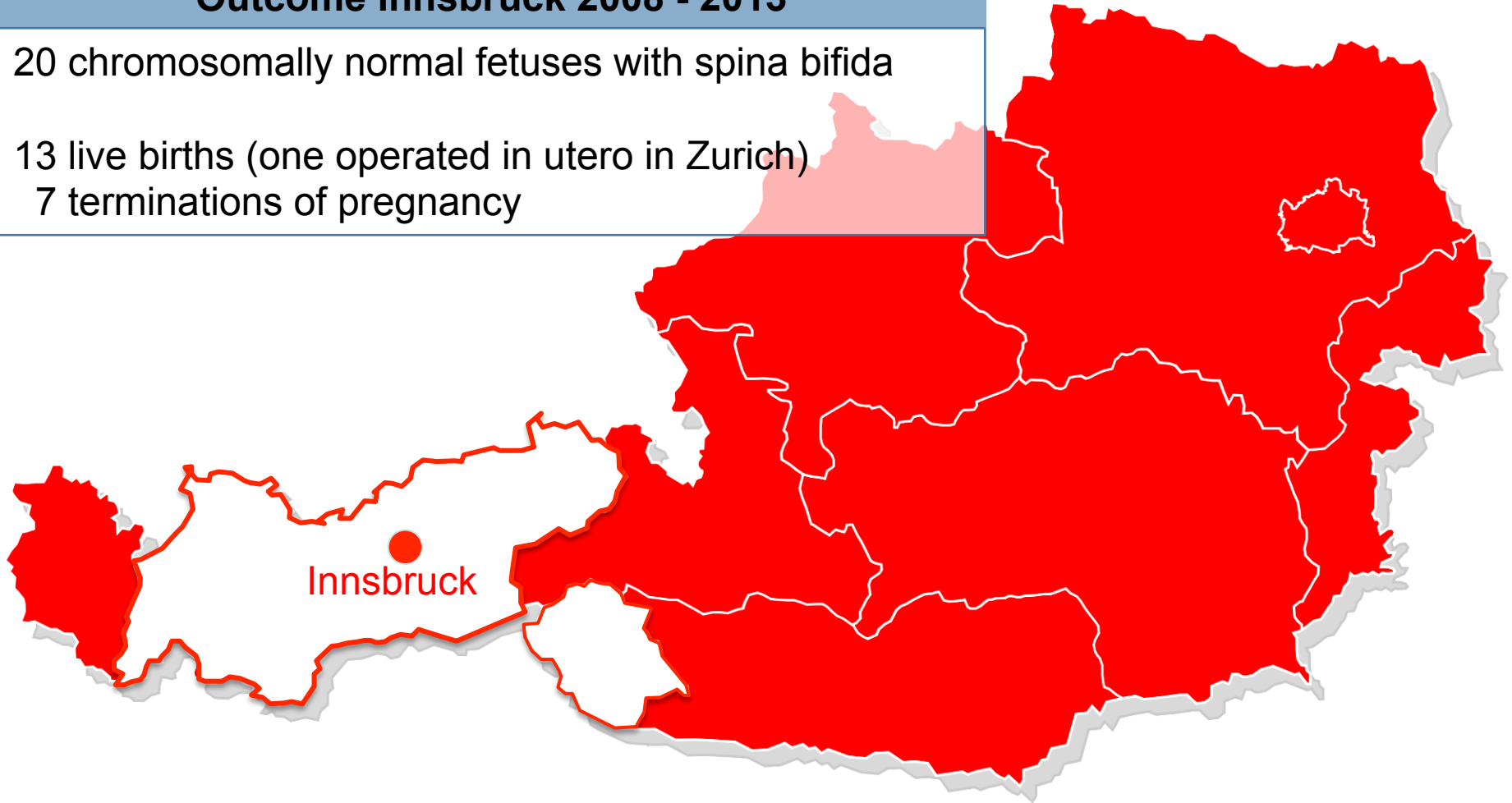
Health Services

Outcome Innsbruck 2008 - 2013

20 chromosomally normal fetuses with spina bifida

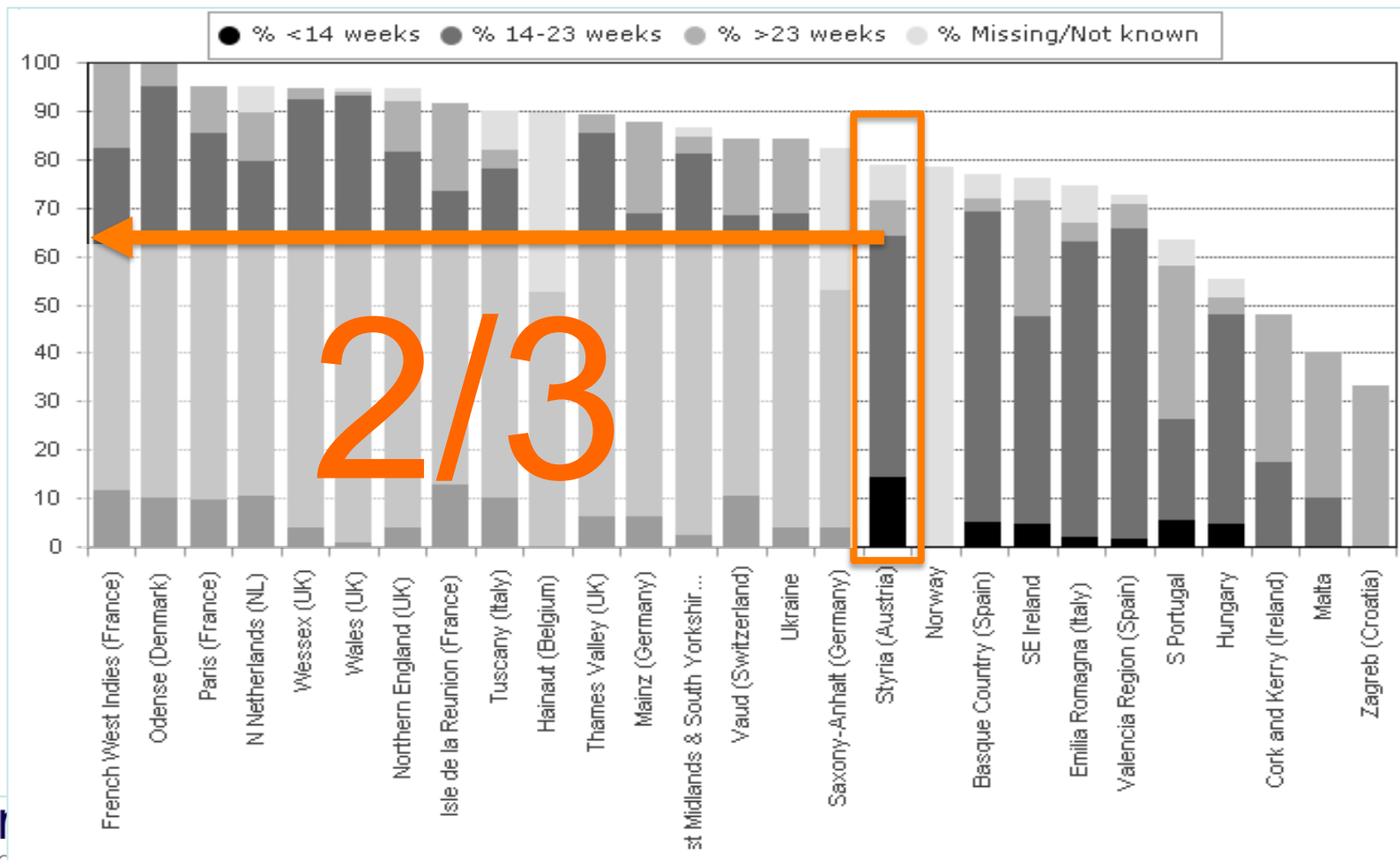
13 live births (one operated in utero in Zurich)

7 terminations of pregnancy



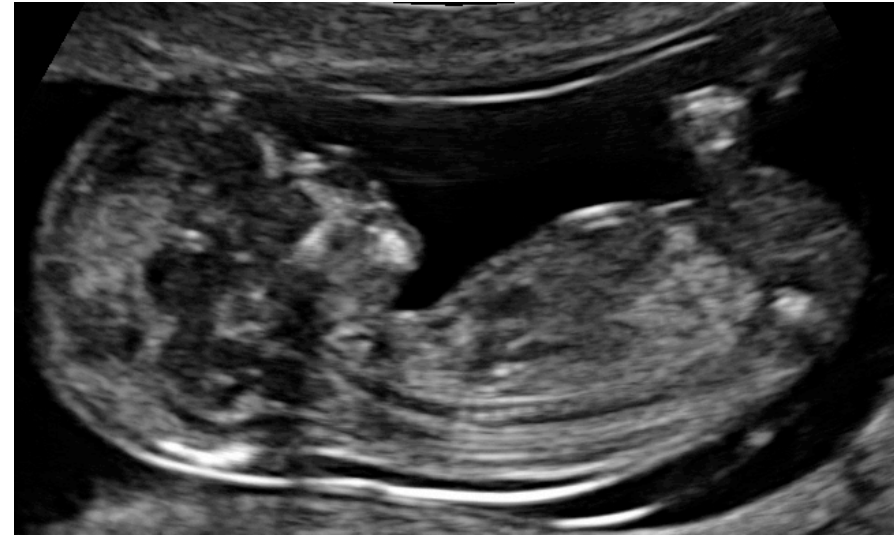
Prenatal Detection Rates

Prenatal Detection Rates 2008 – 2012 in chromosomally normal fetuses



Future Issues

- Improvement in (early) detection
- Accurate scientifically based counseling
- Easy access to treatment facility



However, management of fetal spina bifida must not be seen different from management of other fetal and maternal diseases

Myelomeningocele: Prenatal Diagnosis, Prenatal Counselling, and Current Management in Austria

Matthias Scheier
University Hospital Innsbruck
matthias.scheier@fetalmedizin.com



Frauenheilkunde Innsbruck